

Off-line Selective Wave Soldering Machine SS-330



**Japan Developed
China Assembled**

ETA SS-330 series off-line selective wave soldering is a high-quality machine developed and designed in Japan and assembled in China. It has been used in many Japanese enterprises and has been recognized by customers.

Introduce:

Selective wave soldering is a special form of wave soldering invented to meet the development requirements of through-hole components welding. It is mainly suitable for the soldering of through-hole components in high-end electronic products. For example: military electronic products, automotive electronics, switching power supply products and other industries which require higher soldering reliability.

ETA SS330 selective wave soldering is a high performance equipment developed in Japan and assembled in China.

Features:

- 1, Chinese, English, Japanese languages can be customized.
- 2, Japan R & D design, China assembly, can provide OEM.
- 3, Spray control: computer control or manually adjust switch, precise control the spray time, spray speed, economy and environmental protection, digital FLUX flow, spray flow, angle, density, width and other parameters can be recorded.
- 4, User-friendly design: fault detection (such as heaters abnormal alarm, etc.), regular maintenance reminders, economy functions, emergency

manual transmission function and tool-free maintenance, reduce equipment failure rates.

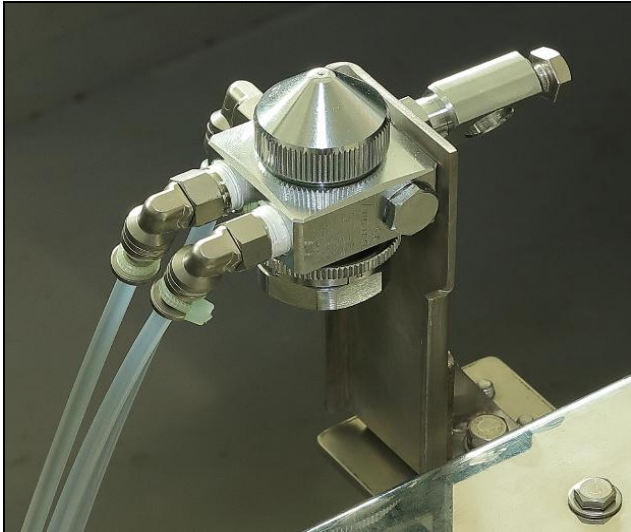
5, Core components: using imported components to ensure long-term stability of equipment operation.

6,It can control the solder quantity, soldering time and solder quantity of each solder spot.

7, Program creation is simple, using pictures or Gerber data to make production program.

8, Nozzle can be selected according to the size of soldering point, and there is no need for fixture to protect non solder parts.

9, Energy saving, low power consumption, 2kw working power, 16kg solder pot, low material input cost,Solder slag less than 200g/ 8h.



Flux system

The XY spray platform is driven by a high-speed step motor. The nozzle is mounted on the XY platform to ensure the accuracy of the spray orientation, and to achieve rapid and accurate positioning. The accuracy of repetition and positioning can reach 0.05mm.



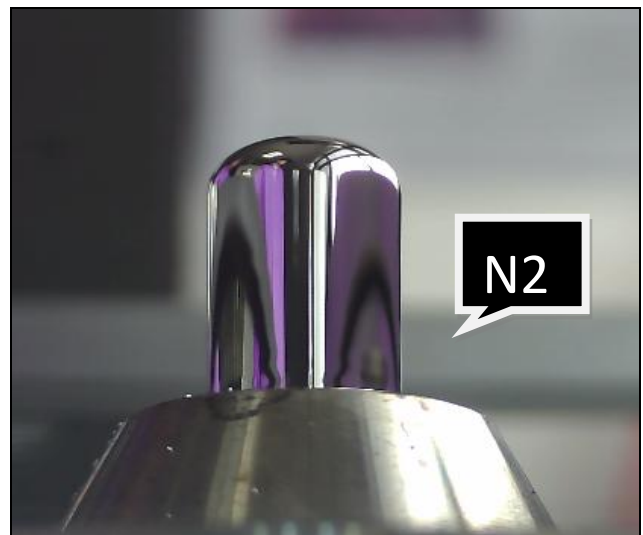
Flux system

Japan high precision nozzle, uniform spraying volume.Spraying range can be adjusted,Hose adopts anticorrosive material.316 stainless steel material,Automatic flux addition. All the core components are Japanese brands



Soldering system

XY platform is composed of high precision ball screw. It is driven by High-speed motor. It can achieve fast and accurate positioning.Z-axis is driven by servo motor ball screw, which drives to move up and down vertically.



Soldering system

Soldering nozzle made in Japan, long service life, segmented nozzle design, ETA unique annular nitrogen protection design with N2 heating function, lower oxidation and better soldering quality.

Other Conditions:



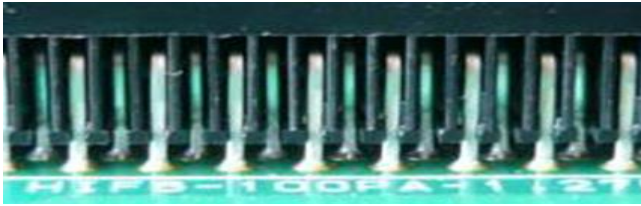
Preheat Option:



Application:



Xray Examination:



Installation Site:



Solution:



Materials List:

No.	Item	Brand	Original
1	Spray Nozzle	Kuroda	Japan
2	Solder Nozzle	Customized	Japan
3	Ball Screw	THK	Japan
4	Sensor	OMRON, KEYENCE	Japan
5	Stepper motor	Oriental	Japan
6	Pneumatic Component	SMC	Japan
7	Motor	Oriental	Japan
8	Switch	IDEC	Japan
9	Bearing	NSK	Japan
10	Other Electrical Component	IDEC, Mitsubishi, Fuji	Japan
11	Heating Tube	SAKAGUCHI	Japan

Specification:

Model		ETA SS-330F (Flux Spraying Machine)
Flux Storage Tank		0.7L
Flux Support		Flux Alarm, Automatic
Spray Nozzle		Japan ST-6SK
Spray Precision		0.1mm
Moving Speed		10~200mm/sec
Spray Height Adjustment		Manual(Adjustment Range:20±5mm)
Spray Flow Control		Electronic Flow Meter
Exhaust Capacity		8m ³ /min(Φ98mm)
Model		Preheat Machine(Optional)
Preheating Mode		Heating plate
Preheating Control Mode		PID + SSR
Preheating Zone		Top:2
Preheating Temp.		(Room Temperature)-200℃
Warm-up Time		Approx.15min (setting 150℃)
Preheating Lift		Pneumatics
Air Pressure		4.5~6Kg/cm ²
Power Supply		220±10%, 50/60HZ, 3.5Kw
Dimension		L630*W580*H390mm
Weight		Approx:220kg
Model		ETA SS-330S (Selective Soldering Machine)
Control Mode		PC+ Microcomputer Controller
Nozzle Inner Diameter		Φ 4-20mm
Max. Wave Height		5mm
Wave Height Accuracy		±0.3mm
Wave Height Control		Step Motor RPM
Solder Pot		SUS316+ Surface Treatment
Solder Capacity		16Kg
Heating Tube Quantity		6 pcs
Max. Temperature		350℃
Warm-up Time		Approx.40min (setting 270℃)
PCB Size		50*50 ~ 250*330mm(380*460 Optional)
PCB Top Clearance		100mm
PCB Bottom Clearance		35mm
PCB Weight		<5Kg
PCB Thickness		0.8-3.0mm
Clearance from PCB edge		5mm
Transport Height		850 ±25mm
N2		Purity of N2: 99.99%, 0.4~0.5 MPa,25 L/min,Outer diameter Φ6mm
Air Pressure		4.5~6Kg/cm ²
Power Supply		220±10%, 50/60HZ, 3.5Kw

Dimension	L830*W630*H1290mm
Weight	Approx:260kg

* The data is obtained under ambient temperature of 25 °C and humidity of 60%

Standard Accessories:

1	Nozzle	2 pcs
2	Operation Software	1 set
3	USB Line (MINI-A 2m)	1 pcs
4	Heating Tube	1 pcs
5	Fuse	1 pcs
6	Relay	2 pcs
7	Manual	1 book
8	Tool Case	1 set

* Attachments may change with product upgrade. If different, please follow the new list.

**Thanks for choosing ETA.
ETA looks forward to win-win cooperation.**